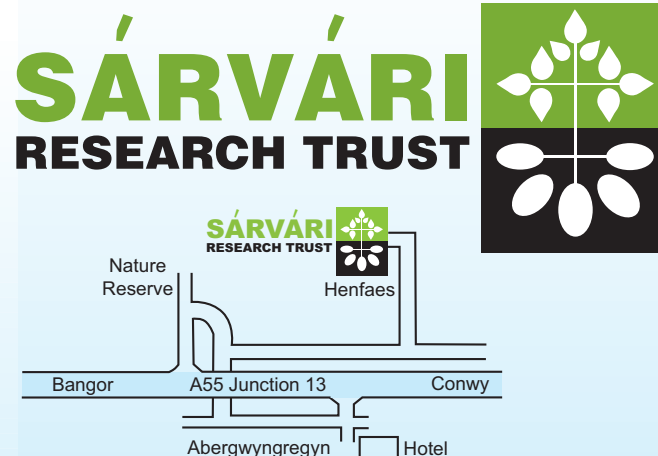


# Sustainable potatoes for the 21st century

- Resistant to late blight and virus diseases
- High yielding, even in low-nutrient soils
- Weed-suppressing foliage
- Early and maincrop varieties
- Varieties for all kitchen uses
- Drought resistant
- Store into spring in un-cooled store

Minimise your carbon emissions by growing these new, low-input varieties

	Skin	Maturity	Dry Matter	Foliage Blight	Tuber Blight	Virus Yo	Leatroll Virus	PCN Ro1	Blackleg
Sárpo Mira	Red	Maincrop	✓✓✓	✓✓✓	✓✓✓	✓✓✓	✓✓		✓✓✓
Axona	Red	Maincrop	✓✓✓	✓✓	✓✓✓	✓✓✓	✓✓✓		✓✓
Sárpo Shona	White	Early M/c	✓✓	✓✓	✓✓	✓	✓✓✓		✓
Sárpo Una	Pink	Second Early	✓	✓✓	✓✓✓	✓✓✓	✓✓		✓✓
Blue Danube	Blue	Early M/c	✓✓	✓	✓✓✓	✓✓✓	✓✓✓	✓✓✓	✓✓✓
Kifli	White	Early M/c	✓	✓	✓✓	✓✓✓	✓	✓✓✓	✓✓✓



Henfaes Research Centre  
Abergwyngregyn, Llanfairfechan, LL33 0LB, UK  
Tel: +44 (0) 1248 364260  
Fax: +44 (0) 1248 681730  
Mobile: 07851826512

[info@sarvari-trust.org](mailto:info@sarvari-trust.org) • [www.sarvari-trust.org](http://www.sarvari-trust.org)



# SÁRPO POTATOES

**Blight resistant for sustainable growing**



# Put away the sprays - Sárpo spuds look after themselves

## Sárpo Mira

- Red-skinned maincrop for baking, fries
- Exceptionally high blight resistance
- Resistant to virus and blackleg
- Drought tolerant
- Firm favourite in the garden and allotment
- Chit seed to advance maturity



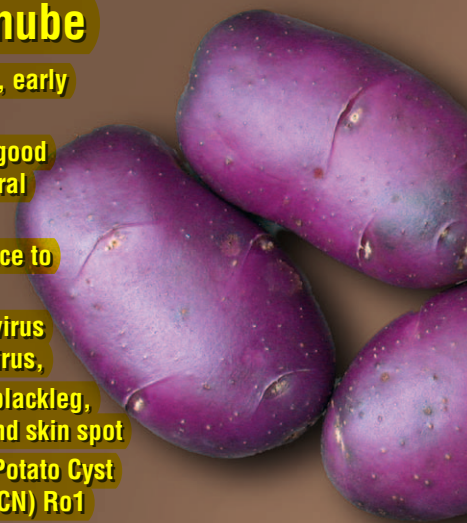
## Sárpo Shona

- White-skinned, early maincrop
- General purpose in kitchen
- Very good resistance to blight and leafroll virus
- Tubers resist powdery scab, black dot and black scurf
- Short, weed-smothering foliage



## Blue Danube

- Blue-skinned, early maincrop
- White flesh, good flavour, general purpose
- High resistance to tuber blight
- Resistant to virus Yo, leafroll virus,
- Resistant to blackleg, black scurf and skin spot
- Resistant to Potato Cyst Nematode (PCN) Ro1



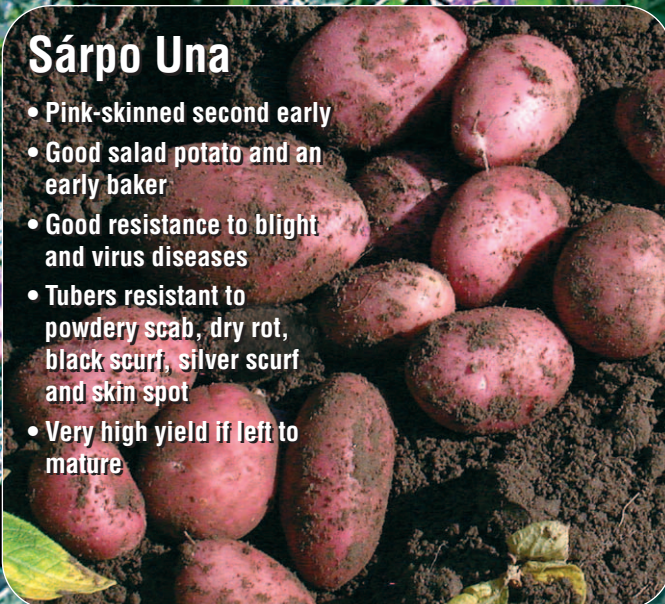
## Axona

- Red-skinned maincrop
- Makes very tasty mash and baked potato
- Very good blight resistance
- Resistant to virus Yo, leafroll virus and blackleg
- Chit seed to advance maturity



## Sárpo Una

- Pink-skinned second early
- Good salad potato and an early baker
- Good resistance to blight and virus diseases
- Tubers resistant to powdery scab, dry rot, black scurf, silver scurf and skin spot
- Very high yield if left to mature



## Kifli

- White-skinned, early maincrop of fingerling type
- Exceptional new-potato flavour persists into maturity
- Good resistance to blight
- Good resistance to virus Yo, blackleg, black dot and black scurf
- Resistant to PCN Ro1

